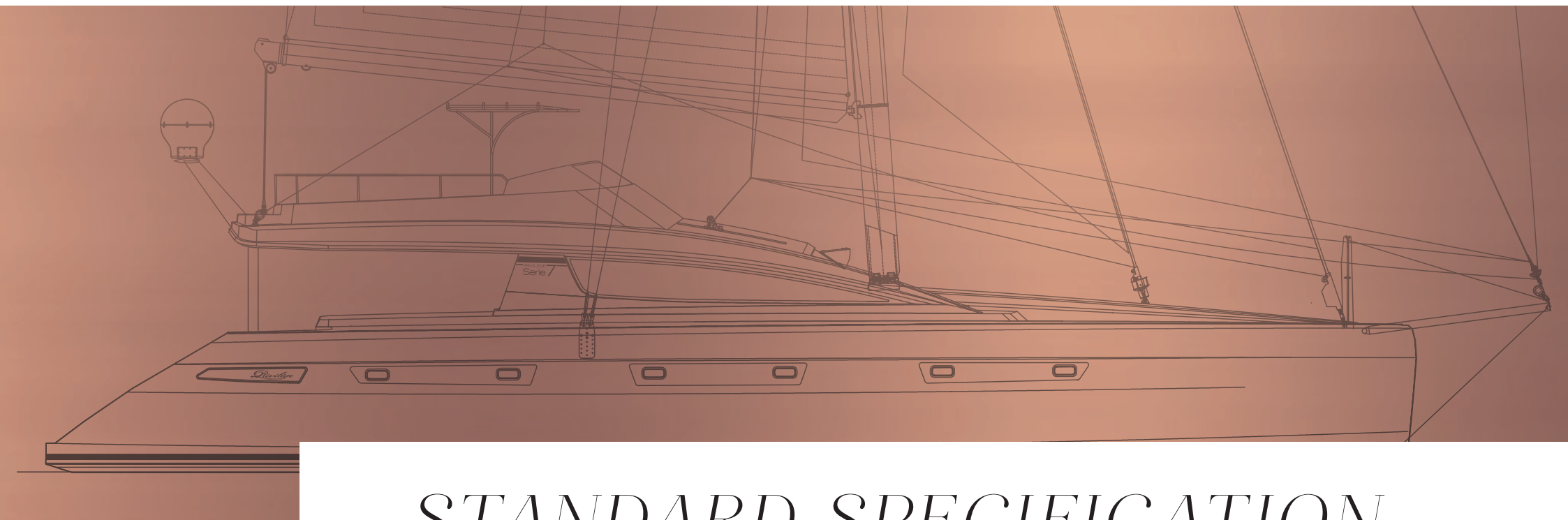


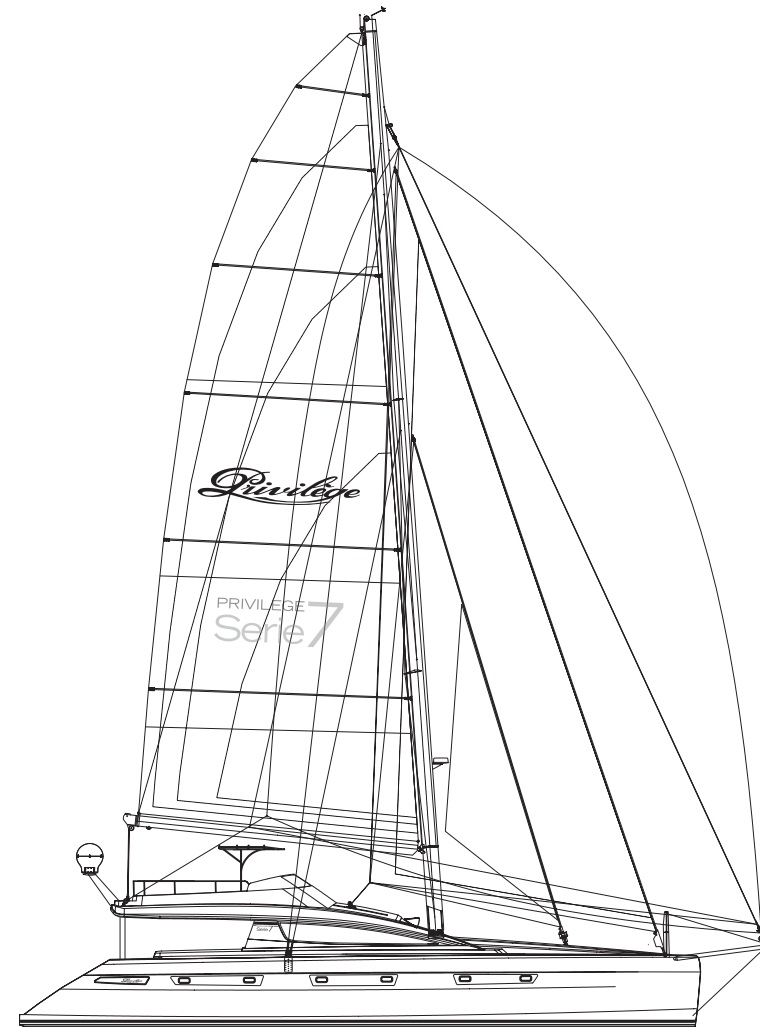
Privilege



STANDARD SPECIFICATION

PRIVILEGE
Serie 7

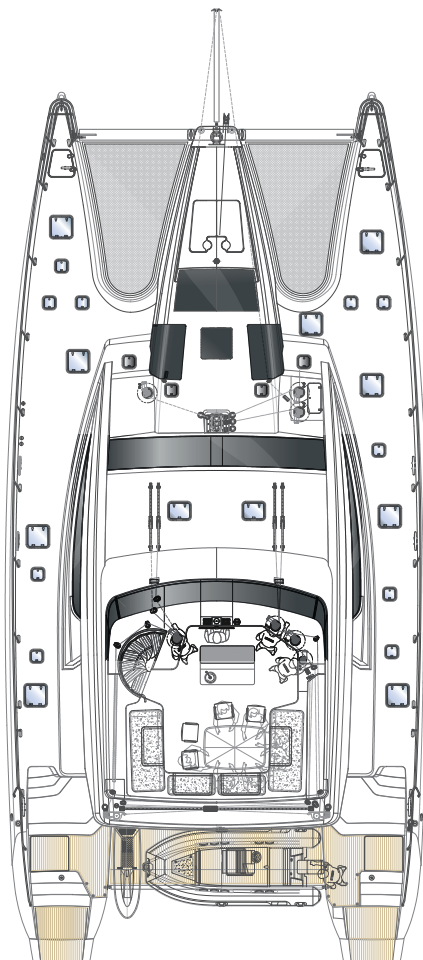
STANDARD SPECIFICATION



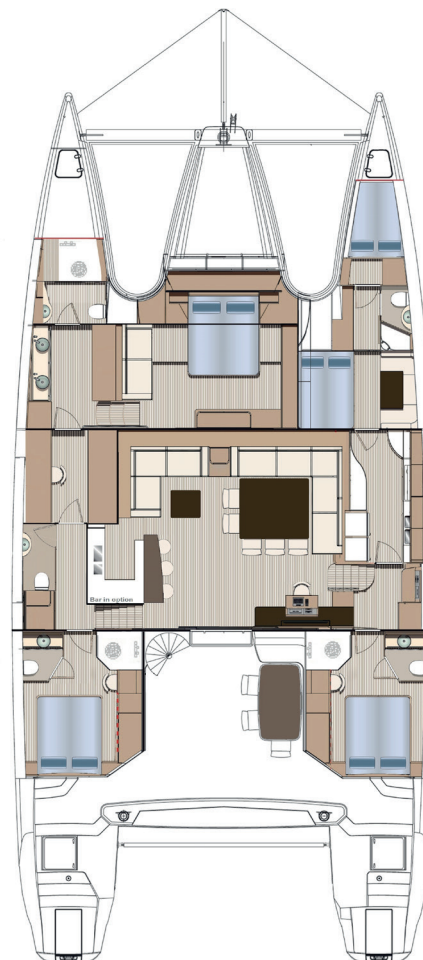
Mainsail	160 m ²	1,720 sqft
Genoa	104 m ²	1,120 sqft
Staysail	44 m ²	475 sqft
Gennaker (option)	232 m ²	2,500 sqft
Asymetric spinnaker (option)	330 m ²	3,550 sqft
Mast length	29.70 m	97'5"
LOA	24.83 m	81'6"
LWL	22.40 m	73'6"
Hull length	22.70 m	74'6"
Beam	10.90 m	35'7"
Draft	2.45 m	8'0"
Displacement light ship	44 t	97,000 lbs
Displacement full load	53 t	120,000 lbs
Fuel tank	2,000 l	528 gal
Fresh water	1,300 l	343 gal
Black water	600 l	160 gal
Engine Diesel	2 × 82 kW	2 × 110 HP
CE Certificate	Cat A	
Design	Cabinet Marc Lombard	
Interior	Franck Darnet Design	

PRIVILEGE
Serie 7

DECK & INTERIOR LAYOUT



5 Cabin
Owner
Layout



STANDARD SPECIFICATION

RIGGING AND SAILS, DECK FITTINGS

Rigging and Sails

- › 97'50" white laquered carbon mast fitted with:
 - ball-bearing-mounted mainsail luff slides.
 - One set of navigation lights, anchor light, deck spot.
 - One mechanical wind vane.
 - steps on mast up to boom.
 - Two fixe steps at top of mast.
- › 32'2" White lacquered canoe boom in carbon fitted with:
 - Lazy jacks.
 - blocks with jammers for reefing lines.
 - One lazy bag.
- › Standing rigging in Dyform (sleeved, except for forestay & diamonds) with:
 - One inner forestay.
 - One forestay.
 - Two lower shrouds.
 - Two shrouds.
- › Running rigging type Dynema with:
 - One topping lift.
 - One genoa halyard.
 - One mainsail halyard.
 - One mainsheet.
 - Two genoa sheets.
 - One mainsail outhaul.
 - One genoa furler line.
 - Three reef lines.
 - Two mainsail car lines.

- › Set of sails:
 - 1,720 sqft mainsail fully battened top square (or roach) in Spectra type DYS 4 reef.
 - 1,120 sqft genoa (Spectra type DYS) on electrical furler.
 - 500 sqft staysail (Sptectra type DYS) on electrical furler.
- › As option:
 - Gennaker 2,500 sqft (Stormlite 2.2) on furler.
 - Asymetric spinnaker 3,550 sqft (nylon triradial) with sock.

Deck fittings

DECK IN GENERAL

- › Large main central pod with front and lateral large windows.
- › Two trampolines in net forward.
- › Two s/steel bow pulpits with seats and navigation lights.
- › Two anchor rollers under main pod.
- › Release of the anchor down the main pod (reinforced and st/steel plate).
- › Two electric windlasses.
- › Chain counter.
- › S/steel plate on chain passage for mooring.
- › S/steel protection plates for docking lines.
- › Three lockers in the pod with access by deck hatch including one for mooring.
- › Two fore peaks with deck hatch including one berth on starboard.

STANDARD SPECIFICATION

DECK FITTINGS

DECK IN GENERAL

- › Eight s/steel mooring cleats.
- › Four large st/steel mooring cleats on sides.
- › St/steel hard guardrail with stanchions two guardrails lines.
- › Two lifelines.
- › Two lateral openings in the guardrails.
- › Two aft pushpits.
- › Two handrails on coachroof.
- › Two aft electrical windlasses for doking lines.
- › Two travellers for genoa sheets on the roof with blocks and endstops.
- › Two travellers for staysail sheets on the roof with blocks and endstops.
- › Two st/steel cars up to fly under windshield.
- › One mainsail traveller on track at the rear of the fly.
- › Two electric winchs ST70 on fwd stbd deck for mainsail halyard, reef, spare, topping lift.
- › One electrical winch ST66 at mast on port for tack and gennaker halyard.
- › One electrical winch ST48 for mainsheet traveller on starboard.
- › One electrical winch ST70 for mainsheet on starboard.
- › Two electrical winches ST80 for genoa and staysail sheets.
- › All sails electrical controls at the fly at helmstation.
- › Removable carbon boarding plank with two transom receivers (one per hull).

COCKPIT

- › One large transversal locker (7'5" × 2'6") and two others, including one for the liferaft (double access).
- › Large bench in L-shape on starbord side.
- › Cockpit table in teak with s/steel support .
- › One bench on port side.
- › Set of cockpit cushions in Batyline
- › Batyline sunbathing mattresses.
- › Teak lathed cockpit floor and transoms.
- › Manual sliding door cockpit/salon in aluminium with st/steel frame.
- › Large hardtop with halogen light incorporated, with fly above.
- › Access stairs to the fly all st/steel with teak steps and lights.
- › Sliding hatch for closing access to the flying bridge.
- › Two stainless steel davits for tender with teak passage between both transoms.
- › As option:
 - Large platform in teak fixe.
 - System of lifting the tender at fly on electrical winches (in stead of davits).
 - Carbon boom in mast hydraulic (in stead of davits).

STANDARD SPECIFICATION

DECK FITTINGS, PLUMBING SYSTEM & TANKS

Deck fittings

TRANSOMS

- › Extended transoms with large bath platforms.
- › One deck shower hot/cold water.
- › One folding s/steel swim ladder under transom floor with teak steps.
- › Two handrails in transoms.
- › One st/steel cleat per transom.

FLYING BRIDGE

- › Access to fly by a large st/steel spiral staircases.
- › Large bench in C-shape with teak fixe table on starboard.
- › Sunbath mattress area.
- › Fly cushions with backrests.

HELMSTATION

- › Central helmstation with hydraulic helm diam 39' covered with leather.
- › Console for receiving electronics and the navigation.
- › Electronic engines throttles with engines panels.
- › Forward windshield in plexiglass with st/steel frame.

- › PVC protection for instruments.
- › All winches and controls back at helmstation.
- › Helmsbench with cushions.

Plumbing System & Tanks

- › Two hot water boilers of about 26 gal each.
- › Four pressurized water systems w/ st/st expansion jar.
- › Pumping dry circuit in bilges principal ④ and two auxiliary ②.
- › Five shower pumps.
- › Two diesel tanks of 265 gal each with 24 V transfert pump.
- › Two fresh water holding tanks 171 gal each with 24 V transfert pump.
- › Four black water tanks for about 80 gal each.
- › Ceramic single-lever mixer taps.
- › Four electric fresh water toilets Tecma.
- › One fresh water toilet Tecma in crew quarters.
- › Watermaker about 53 gal/H.
- › Fresh/sea water outlet in the cockpit and at windlass.
- › Sea water outlet at windlass.



STANDARD SPECIFICATION

ELECTRICAL EQUIPMENT

- › 220 V 50 HZ circuit AC 24 VDC (services) with 220 V outlets in all the boat.
- › Batteries for services management.
- › Electrical management Domotic with control panel and 12" screen at navigation station.
- › 1 inverter 5,000 W (general circuit).
- › 1 inverter 2,500 W (computer, domotic, entertainment).
- › 2 battery chargers 100 A – 24 V.
- › Gel services batteries approximative 1,250 A – 24 VDC and 200 A for emergency.
- › Batteries for engines 180 Amp – 12 Vdc coupled (for standard engines).
- › Two shore power plugs of 220Vac 50Amp without furler.
- › One voltmeter & AC ampermeter.
- › One ampermeter for controlling electricals consumption.
- › cigar-lighter socket 12 V.
- › One 24 V and USB outlet at chart table.
- › One 24 V 220 V USB waterproof outlet in cockpit.
- › Two 12 V outlets (crew desk and chart table).
- › Main electrical distribution panel at chart table.
- › 24 VDC alternator more.
- › Generator about 22.5 KVA/220 V – 1,500 rpm on silent blocs.
- › Centralised reversible A/C water cooled 96,000 BTU (Four cab and salon).
- › Tricolour and mooring lights masthead.
- › Navigation lights on fwd pulpits and fly-bridge.
- › Deck light and steaming light.
- › LED lights inside and outside.
- › Lights in engines compartments.
- › Courtesy lights inside and outside.
- › Light on hulls sides (optic fibres).
- › Light in cockpit and at fly (boom).
- › Light on transoms and at aft plateform.
- › Lights in cockpit and salon on dimmer.

STANDARD SPECIFICATION

ACCOMMODATION

- › Carpentry in maple with mat finish.
- › Floors in streamfloor with stripes, sandwich structure.
- › All working top type corian resin.
- › Microfibre ceiling liners on lightweight support anti distorsion.
- › Curtains type Oceanair everywhere in the boat.
- › Lateral curtains in salon electrical (to be manual on the front windshields).
- › All seats covered with microfiber or type leather.
- › Finish Franck Darnet Design (as option).

PORT HULL

- › Central owner's suite on main forward pod
 - Large windows forward and lateral with curtains.
 - Private access from port gangway.
 - Large bed 5'9" × 6'56" on the main pod with niches and reading lights at head of bed.
 - Bench area on side of bed with storage underneath.
 - Large hanging cupboard and numerous storage.
 - Library furniture at bed foot for receiving the TV.
 - Three deck hatches and one long plexi window on hull side.
 - Three 220 V outlets.
- › Owner's bathroom forward
 - Large working top with two glass modern sinks.
 - Sanitary accessories design.
 - Nice shower cabin forward with multi jets shower.

- Electrical toilet fresh water.
- Numerous storage.
- Mirror and incorporated lights.
- One 220 V outlet.
- › Port companionway
 - Private office area on hull side with sea, drawers and storage.
 - Deck hatch and large plexi window on the hull side.
 - Numerous storage and hanging space at the backside of the office.
 - Day toilet with washhand .
 - Large storage cupboard to be converted as option front the stairs.
 - One 220V outlet.

- › Guests cabin at the rear
 - Large bed 5'25" × 6'56" with storage drawers underneath and reading lights at head.
 - Desk area – hair dressing table with sofa, mirror and low storage.
 - Large hanging cupboard full height at the entrance of the cabin.
 - Deck hatch and large long window on hull side.
 - Two 220 V outlets.
- › Guest heads
 - Separate shower with mixer tap (no multi jets).
 - Private headroom with door and large plexi window on hull side.
 - Washbasin in glass with mixer tap on resin work top.
 - Electrical toilet fresh water .
 - Sanitary accessories design.
 - One 220 V outlet.

STANDARD SPECIFICATION

INTERIOR ACCOMODATION

STARBOARD HULL

- › Crew quarters forward
 - Private salon area for the crew with table and bench.
 - Deck hatch and large long window on hull side.
 - One double bed with storage.
 - Cupboard dedicated to store linen and laundry.
 - One single crew berth in starboard fore peak with access from the deck.
 - Two 220 V outlets.
 - One safe.
- › Crew head forward
 - Shower, washhand, storage and fresh water electric toilet.
 - Sanitary accessories design.
 - Deck hatch and plexi window on hull side.
 - One 220 V outlet.
- › Starboard stairs
 - Technical desk for the captain front to the stairs with seat.
 - Management panel for generators, watermaker, A/C
 - Large electrical management panel.
 - Washer – dryer and storage.
 - One 220 V outlet.
- › Guests cabin at the rear
 - Large bed 5'25" × 6'56" with storage drawers underneath.
 - Two reading lights.
 - Desk area – hair dressing table with sofa and mirror.
- Large hanging cupboard.
- Deck hatch, hull large window and one opening porthole.
- 2 x 220V outlets.
- › Guest heads
 - Separate shower with multi jets and mixer tap.
 - Washbasin with mixer tap.
 - Electrical toilet fresh water.
 - Sanitary accessories chromed.
 - One 220 V outlet.
- › Galley in gangway central
 - Two large working plans on both sides.
 - Double large sink.
 - Large size gas cooking plate five burners with gaz leak detector.
 - Electrical oven.
 - Built in micro wave oven.
 - Two fridges for a total of approx. 85 gal.
 - Two freezers for a total of approx. 58 gal.
 - Dish washer for 12.
 - Hood over cooker with filters.
 - Numerous storage and drawers.
 - Large window on side with opening porthole and deck hatch.
 - Three 220 V outlets.

STANDARD SPECIFICATION

INTERIOR ACCOMODATION, ENGINES & PROPELLERS

Interior accomodation

ON THE MAIN PLATEFORM

- › Lounge area on port side
 - Large bench inL with coffee table.
 - Storage area.
 - Library and low furniture (bar in option as per drawing).
 - One 220 V outlet.
- › Dining area on starboard
 - Large dining table for receiving eight persons.
 - Bench in L and four design chairs.
 - Cupboard for dishes, glasses and cuttlery storage.
 - One 220 V outlet.
- › Navigation and tv area
 - Chart table with storage, seat and storage.
 - Console for receiving electronics supervision and entertainment.
 - Furniture for receiving the telescopic TV (electric system).
 - One 220 V outlet.

Engines & Propellers

- › Two Sound-proofed technical rooms insulated at deck and hulls heights with:
 - Two 200 HP volvo diesel engines with hydraulic gearbox.
 - Alternators two 175 Amp 24 Vcc.
 - Two folding three blade propellers.
 - Ventilation with fans.
 - Access to technical rooms through large cockpit insulated hatch.
 - Second technical access from floors in aft cabins.
 - Storage of generator, watermaker, boiler, water system
 - Light, extracting fan, access ladder.
- One 220 V outlet

STANDARD SPECIFICATION

ELECTRONICS & HIFI

Electronics & Hifi

Electronic equipment to be customized, but Standard Pack including:

› At chart table:

- Domotic management unit on one 12" screen.
- VHF Ray 260E.
- Multi i70 for navigation station.
- Autopilot control P70 with hydraulic control unit.
- GPS Raystar 130 with active antenna.
- Radar screen C125 multi 12' with chart Rest of the World.

› At helmstation:

- Repeater for domotic management on waterproof 12" screen.
- VHF secondray kit with speaker.
- Navigation station i70 with two multi screens.
- Autopilot Autohelm with hydraulic control unit.
- Radar C125 multi 12" with chart Europe and antenna 4 KW 24'.

› In the Owner's Suite:

- TV LCD 20".
- Prewiring for TV & internet & entertainment.

› In the Cabins:

- Prewiring for TV & internet & entertainment.

› In the Salon:

- Radio Marine 700/ipod/USB Fusion with ampli & six speakers (salon ②, Fly ②, cockpit ②).
- TV LCD 37" stowable and swivelling.

› Safety & Miscellaneous

- Four docking lines of 82'.
- Eight fenders.
- Main mooring with 132 lb Delta anchor + 328' of chain diam 0'63.
- Second mooring with 132 lb Delta anchor + 131' of chain + 164' rode .
- mooring bridle.
- S/steel emergency tiller.
- basic antifouling for departure process.
- launching, masting, sea trials and hand over.